

SHOP TIPS

Autolite



VOL. 8, NO. 1

SEPTEMBER, 1969

1970 Announcement Issue

- Autolite Part Numbers
- Maintenance Schedules
- Specifications
- Service Procedures
- Model Identification
- New Features

Grandé



FORD TRUCKS

1970 Models &

Ford F-100



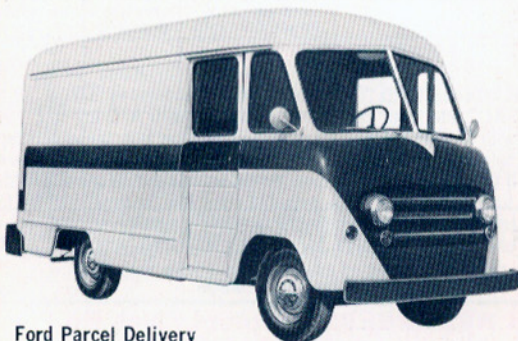
Ford F-250



Ford F-350



Ford Parcel Delivery



GASOLINE ENGINES

Engine	240 CID	300 CID	302 CID	360 CID	390 CID
Bore (Inches)	4.00	4.00	4.00	4.05	4.05
Stroke (Inches)	3.18	3.98	3.00	3.50	3.786
Taxable (SAE) Horsepower	38.4	38.4	51.2	52.5	52.5
Compression Ratio	9.2:1	8.8:1	8.6:1	8.4:1	8.6:1
Engine Idle Speed (rpm)Ⓛ	500/850	775/500	800/500	650/500	650/500
Standard Transm.Ⓜ	Ⓟ				
Over 6000 GVW (Calif.)	600	—	—	—	—
Automatic Transm.ⓂⓅ	500/575	500/550	600/500	600/500	550/500
Over 6000 GVW (Calif.)	550	550	—	—	—
Cylinder Firing Order	1-5-3-6-2-4			1-5-4-2-6-3-7-8	
Spark Plug Number (Autolite)	BTF-42	BTF-42	BTF-31	BF-32	BF-32
Spark Plug Gap	0.032-0.036		0.028-0.032	0.032	0.036
Distributor Point Gap					
Exhaust Emission	0.027	0.027	0.021†	0.021	0.021
Non-Exhaust Emission	0.025	0.025	—	0.017	0.017
Ignition Timing—° BTCⓁ	6°	6°	6°	6°	6°

Ⓛ If the individual requirements of the vehicle and/or use of sub-standard fuels dictate, the initial timing may have to be retarded from the "Normal" setting to eliminate detonation. If retarding is necessary it should be done progressively and not to exceed 2° B.T.D.C.

Ⓜ With headlights ON Ⓟ Transmission in drive

Ⓟ Idle speed with throttle activator energized

† 0.021 inch with dual diaphragm distributor

FORD DIESEL ENGINE

Engine	4-Cylinder 242
Bore (inches)	4.125
Stroke (inches)	4.52
Displacement (cubic inches)	242
Taxable (SAE) Horsepower	27.2
Horsepower @ rpm—Net	74 @ 2800
Gross	82.5 @ 2800
Maximum Torque (ft. lb. @ rpm)—Net	186 @ 1700
Gross	186 @ 1700
Compression Ratio	16.5 to 1
Compression Pressure	363 psi @ 215
Maximum Engine rpm (No Load)	3090
(Loaded)	2800
Idle Speed (rpm @ Neutral) Hot	500-550
Valve Lash Hot (inches)—Intake	.015
—Exhaust	.012
Oil Pressure Hot (psi)	45-55
Cylinder Firing Order	1-2-4-3
Air Cleaner—Type	Oil Bath
Injection System	
Injector Nozzle Opening Pressure psi	2600-2700
Injector Pump Timing	22° BTDC
Belt Tension (New)	140 lbs.
(Reset—After 10 min. operation)	110 lbs.

Specifications

100 THRU 350, AND P SERIES

FORD TRUCKS

APPROXIMATE REFILL CAPACITIES

(U.S. Measure)

COOLING

Engine	Truck Model	Approx. Capacity* (Quarts) U.S. Measure
240	F-100-250—4 x 2 (Manual Transmission)	13
	(Automatic Transmission)	14½
	W/Air Conditioning	17
240	F-100-250—4 x 4, F-350 Single Rim Rear Wheels W/Air Conditioning	12 18½
240	F-350 Single Rim Rear Wheels (Automatic Transmission)	14½
240	F-350 Dual Rear Wheels W/Air Conditioning	17 18½
240	P-350-400-500	17
300	F-100-250—4 x 2, F-100-250—4 x 4, F-350 Single Rim Rear Wheels W/Air Conditioning	14½ 17
	F-350 Single Rim Rear Wheels (Automatic Transmission) W/Air Conditioning	17 18½
300	F-350 Dual Rear Wheels W/Air Conditioning	17 18½
300	P-350-400-500	18
302 360	F-100-250—4 x 2 W/Air Conditioning	22 22½
	F-100-200—4 x 4, F-350 Single Rim Rear Wheels, F-350 Dual Rear Wheels W/Air Conditioning	22¼ 24
390	F-100-250—4 x 2	22¼
390	F-350 Single Rim Rear Wheels, F-350 Dual Rear Wheels W/Air Conditioning	22¼ 24

*Includes 1 quart for trucks equipped with heater.

CRANKCASE

Engine	Quarts*
240 Six	4
240 Six (4 x 4, F-350 and P-Series)	5
300, 302, 360 and 390 C I D	5

*Add 1 Quart with filter change.

REAR AXLE

Rear Axle Model	Truck Model	Pints
Ford 3300	F-100, P-100	6½
Dana 44F (front axle)	4-Wheel Drive (F-100, F-250)	3¾ *
Dana 44F HD (front axle)	4-Wheel Drive (F-250)	3¾ *
Dana 60-3	F-100	6
Dana 60	F-250, P-350, P-3500	6
Dana 70	F-350, P-350, P-3500, P-400, P-4000	6
Rockwell C-100-N	P-500, P-5000	13
Rockwell D-100-N	P-500	13

*Add 1 pint for each steering knuckle.

FUEL TANK

Tank Type	Truck Model F-100-350 And P-Series	Gallons
Standard	F-Series (cab models) Except Calif. Reg.	20
	F-100 (California registration Cab Models)	18½
	F-100, 250 Chassis windshield, P-Series Chassis, F-350 Series Cowl or Chassis windshield models	17
Optional (Outside of Frame)	P-350, P-400 and P-500	30
Optional (Under Cab)	F-100/F-350 (Except Calif. Reg.)	24
	California Registration Only	22

TRANSMISSION

Transmission Type and Make	Pints
3-Speed (Ford)	3½
3-Speed w/Overdrive (Warner T-85-N)	4
3-Speed Medium Duty (Warner T-89-F)	3¾
3-Speed Heavy Duty (Warner T-87-G)	5½
4-Speed (Warner T-18)	6½
4-Speed (New Process 435)	6½
HD Cruise-O-Matic	22
C-4 Automatic	20½
C-6 Automatic	25½
4-Wheel Drive Transfer Case Single Speed F-100	1¼
4-Wheel Drive Transfer Case 2-Speed F-250	4½

CIRCUIT PROTECTION

Circuit	F-100-350	P-Series
Tail, Park, License, Marker and Stop Lights		12 amp. C.B. ③
Tail, Park, License, Marker Lights and Horn	15 amp. C.B. ③	
Dome, Courtesy, Map, Cargo Lights and Cigar Lighter	Models 81, 85 AGW 15 Fuse ① Model 84	SFE or AGW 7.5 Fuse
Turn Signal, Backup Lights and W/S Washer (F-Series Only)	SFE-14 Fuse ①	AGC-10 Fuse ④
W/S Washer Pump	Integral C.B.	AGC-10 Fuse ④
Instrument Panel Lights	AGA-2 Fuse ①	AGA-1 Fuse ④
Emergency Warning and Stop (F-Series Only) Lights	AGX-20 Fuse ①	SFE-14 Fuse ④
Headlights	12 amp. C.B. ③	12 amp. C.B. ③
Heater	AGC or SFE-20 Fuse ①	SFE-14 Fuse ④
W/S Wiper	C.B. ④	C.B. ⑤
Roof Marker Lamps F-350 Stake Platform or Dual Wheels	Camper Special Option 15 amp. C.B. 25 amp. C.B.	
Charging and Gauge Circuit	Fuse Link ④	
Overdrive Transmission	AGC-15 Fuse ③	
Fuel System (Dorset Diesel)		6 amp. C.B.

① Fuse Panel

② Integral with Headlamp Switch

③ Clip on O.D. Relay

④ Cartridge in Feed Wire

⑤ Integral with Switch

NOTE: DO NOT exceed 8.5 amp. load across ignition switch for rear light circuit on trucks or buses with hydraulic stop light switch.

LIGHTS (12 VOLTS)

Description	Candle Power or Wattage	Lamp Number
Cigarette Lighter Socket	1.5 c.p.	1445
Dome Light	1.5 c.p.	1004
Front Parking Only	4 c.p.	97
Front Turn Signal/Parking	32-3 c.p.	1157
Heater Control	2 c.p.	1895
Alternator Indicator	2 c.p.	1895
Headlights Single—High/Low Beam	50/40 Watts	6012
Instrument Cluster Illumination	2 c.p.	1895
Instrument Panel Indicators—Hi-Beam	2 c.p.	1895
Marker	4 c.p.	97
Oil Pressure	2 c.p.	1895
Radio Dial	2 c.p.	1895
Rear License Light Only	4 c.p.	97
Rear Turn Signal & Stop/Tail	32-3 c.p.	1157
Spotlight Par 46	30 Watts	4435
Spotlight Par 36	30 Watts	4405
Rear or Front Turn Signal only	32 c.p.	1156
Fog Lights, Amber	35 Watts	4415A
Fog Light Switch	1 c.p.	53X
Turn Signal Indicator	2 c.p.	1895
Brake Warning Light	1.5 c.p.	1445